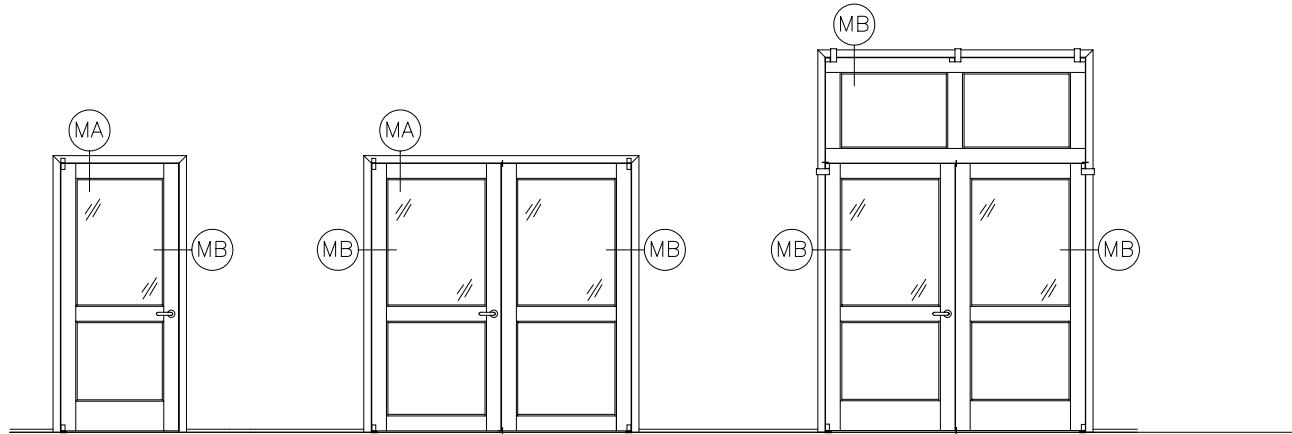


THIS DOCUMENT CONTAINS PROPRIETARY INFORMATION WHICH MAY NOT BE DISCLOSED TO OTHERS FOR ANY PURPOSE WITHOUT WRITTEN PERMISSION FROM PLASCORE INC.

PROJECT NAME:	_____
SUBMITTAL REVISION:	_____
APPROVED BY:	_____
DATE:	_____



**Single Door**

**Double Door**


**Double Door with Transom**

The Narrow Stile doors are available as a single door, double door, or a double door with a transom. They are also available in Full Glazed, Half Glazed, or Solid.

These doors are available with a range of hardware options – push/pull, passage set, lock set, flush bolts, exit device, door sweep, and astragal. Versatile hinges allow for adjustment in three directions.

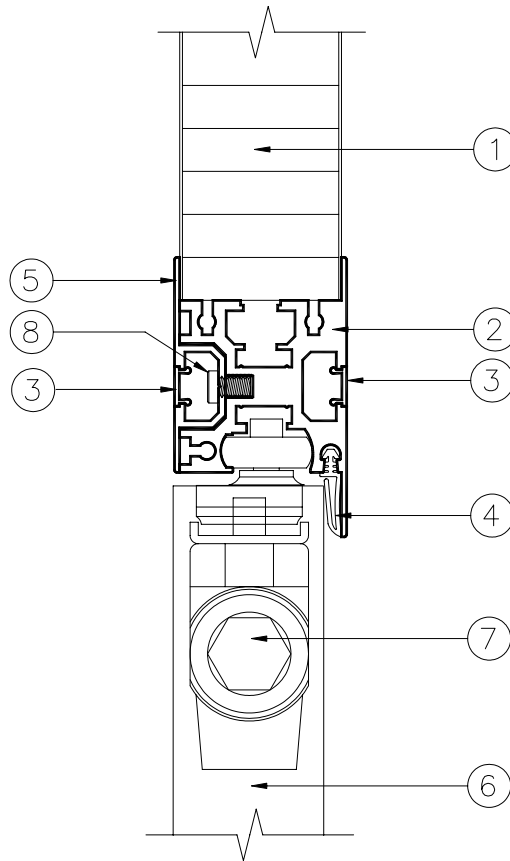
The transom door locks in place, allowing the lower doors to act as a regular double door. With a flip of the flush bolt levers, the transom door can swing out of the way, creating a tall opening for tool move-in.

CODE	COLOR	CODE	COLOR
A	Shell White	ZA	Anod. w/Shell Enc. Cap
B	Designer White	ZB	Anod. w/Design Enc. Cap
G	Driftwood Grey	ZC	Anod. w/Black Enc. Cap
J	Polar White	ZG	Anod. w/Driftwood Grey Enc. Cap
Z	Satin Anodized		

No.	Qty	Item No.	Description	Finish
UNLESS OTHERWISE SPECIFIED, DIMENSIONS ARE IN INCHES AND TOLERANCES ON:			 <b>PLASCORE</b> 615 N. FAIRVIEW STREET ZEELAND, MICHIGAN 49464 (616) 772-1220	
[XXXXX] = CRITICAL DIM LEVEL 2 [XXXXX] <sup>3</sup> = CRITICAL DIM LEVEL 3  FRACTIONS: = ± 1/16 DECIMALS: X=±0.1 .X=±0.06 .XX=±0.03 .XXX=±0.01  ANGLES: = ± 2°			DWG TITLE: <p style="text-align: center;">Wide Stile Door Overview DETAIL (MAA)</p>	
SIZE	FSCM	DWG NUMBER	REV	
A	39212	831072MAA	-	
DRAWN BY: A. SCHOUMAN			DATE: 07/10/03	
ENGRG:			QC APP.	
CAD#	831072MAA		SCALE:	SHEET: 1 OF 1

THIS DOCUMENT CONTAINS PROPRIETARY INFORMATION WHICH MAY NOT BE DISCLOSED TO OTHERS FOR ANY PURPOSE WITHOUT WRITTEN PERMISSION FROM PLASCORE INC.

PROJECT NAME: \_\_\_\_\_  
 SUBMITTAL REVISION: \_\_\_\_\_  
 APPROVED BY: \_\_\_\_\_  
 DATE: \_\_\_\_\_



No.	Qty	Item No.	Description	Finish
8	1	840808	SCREW, BATTEN LSHCS 1/4-20 x 3/8"	-
7	1	-----	CLOSER, LCN CONCEALED	-
6	1	-----	DOOR LEAF	Z
5	1	830593	BATTEN, 2.50" TEE	A,B or Z
4	1	830659	GASKET, DOOR FRAME	-
3	2	830606	ENCLOSURE CAP	A,B, or G
2	1	830607	DOOR JAMB, 2.00" TOP	A,B or Z
1	1	-----	PANEL, 1.88"	A,B, or J

CODE	COLOR
A	SHELL WHITE
B	DESIGNER WHITE
Z	SATIN ANODIZED
ZA	Anod. w/Shell Enc. Cap
ZB	Anod. w/Design Enc. Cap
ZG	Anod. w/Driftwood Grey Enc. Cap
ZC	Anodized w/Black Enc. Cap
-	-
-	-

UNLESS OTHERWISE SPECIFIED, DIMENSIONS ARE IN INCHES AND TOLERANCES ON:  
 [XXXXX] = CRITICAL DIM LEVEL 2  
 [XXXXX]<sup>3</sup> = CRITICAL DIM LEVEL 3  
 FRACTIONS: = ± 1/16  
 DECIMALS: X=±0.1  
 .XX=±0.06  
 .XXX=±0.03  
 .XXX=±0.01  
 ANGLES: = ± 2'

**PLASCORE** 615 N. FAIRVIEW STREET  
 ZEELAND, MICHIGAN 49464  
 (616) 772-1220

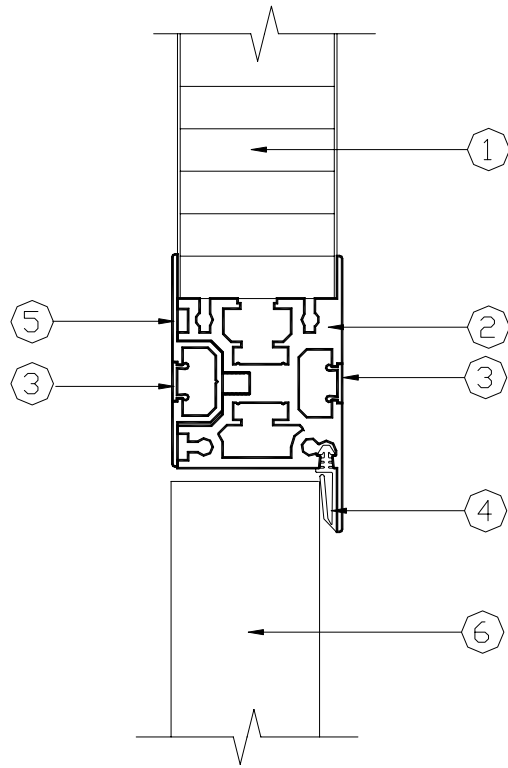
DWG TITLE:  
 1.88" PANEL  
 TOP DOOR JAMB  
 DETAIL (MA)

SIZE	FSCM	DWG NUMBER	REV
A	39212	831072MA	-

DRAWN BY: D. Lubbers      DATE: 5/15/97  
 ENGRG:      QC APP.  
 CAD# 831072MA      SCALE: 1/2      SHEET: 1 OF 1

THIS DOCUMENT CONTAINS PROPRIETARY INFORMATION WHICH MAY NOT BE DISCLOSED TO OTHERS FOR ANY PURPOSE WITHOUT WRITTEN PERMISSION FROM PLASCORE INC.

PROJECT NAME: \_\_\_\_\_  
 SUBMITTAL REVISION: \_\_\_\_\_  
 APPROVED BY: \_\_\_\_\_  
 DATE: \_\_\_\_\_



CODE	COLOR
A	SHELL WHITE
B	DESIGNER WHITE
Z	SATIN ANODIZED
ZA	Anod. w/Shell Enc. Cap
ZB	Anod. w/Design Enc. Cap
ZG	Anod. w/Driftwood Grey Enc. Cap
ZC	Anodized w/Black Enc. Cap
-	-
-	-

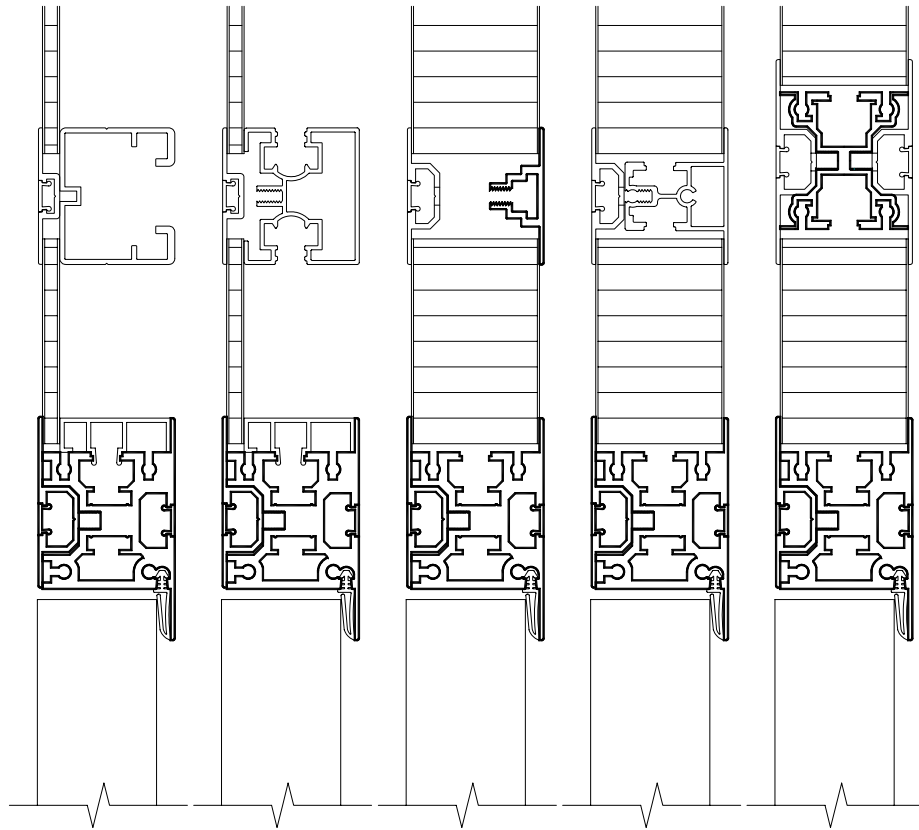
6	1	-----	DOOR LEAF, 1.75	Z
5	1	830593	BATTEN, 2.50" TEE	A,B or Z
4	1	830659	GASKET, DOOR FRAME	-
3	2	830606	ENCLOSURE CAP	A,B, or G
2	1	830608	DOOR JAMB, 2.00" SIDE	A,B or Z
1	1	-----	PANEL, 1.88"	A,B, or J
No.	Qty	Item No.	Description	Finish
			UNLESS OTHERWISE SPECIFIED, DIMENSIONS ARE IN INCHES AND TOLERANCES ON:	
			XXXXX = CRITICAL DIM LEVEL 2	
			XXXXX <sup>3</sup> = CRITICAL DIM LEVEL 3	
			FRACTIONS: = ± 1/16	
			DECIMALS: X=±0.1	
			.X=±0.06	
			.XX=±0.03	
			.XXX=±0.01	
			ANGLES: = ± 2°	
			CAD# 831072M	
		<b>PLASCORE</b>		615 N. FAIRVIEW STREET ZEELAND, MICHIGAN 49464 (616) 772-1220
DWG TITLE:				
1.88" PANEL WITH SIDE DOOR JAMB DETAIL (M)				
SIZE	FSCM	DWG NUMBER		REV
A	39212	831072M		-
DRAWN BY: D. Lubbers			DATE: 5/15/97	
ENGRG:			QC APP.	
SCALE: 1/2			SHEET: 1 OF 1	

THIS DOCUMENT CONTAINS PROPRIETARY INFORMATION WHICH MAY NOT BE DISCLOSED TO OTHERS FOR ANY PURPOSE WITHOUT WRITTEN PERMISSION FROM PLASCORE INC.

PROJECT NAME: \_\_\_\_\_  
 SUBMITTAL REVISION: \_\_\_\_\_  
 APPROVED BY: \_\_\_\_\_  
 DATE: \_\_\_\_\_

REV.	DATE	DESCRIPTION	SIGNATURE
--	--	--	--

**S5050 WALL**      **F5050 WALL**      **SL2550 WALL**      **F2550 WALL**      **F5075 WALL**



CODE	COLOR
A	SHELL WHITE
B	DESIGNER WHITE
Z	SATIN ANODIZED
ZA	Anod. w/Shell Enc. Cap
ZB	Anod. w/Design Enc. Cap
ZG	Anod. w/Driftwood Grey Enc. Cap
ZC	Anod. w/Black Enc. Cap
-	-
-	-

2	-	831967	CLIP FOR 1.88" PANEL	A,B,J, or Z
1	-	831968	CLIP FOR 0.25" PANEL	A,B,J, or Z
No.	Qty	Item No.	Description	Finish

UNLESS OTHERWISE SPECIFIED, DIMENSIONS ARE IN INCHES AND TOLERANCES ON:  
 [XXXX] = CRITICAL DIM LEVEL 2  
 [XXXX]<sup>3</sup> = CRITICAL DIM LEVEL 3  
 FRACTIONS: = ± 1/16  
 DECIMALS: X=±0.1  
 .X=±0.06  
 .XX=±0.03  
 .XXX=±0.01  
 ANGLES: = ± 2'

		615 N. FAIRVIEW STREET ZEELAND, MICHIGAN 49464 (616) 772-1220	
DWG TITLE: WIDE STILE DOOR JAMB VARIOUS WALL SYSTEM DETAIL (MZ)			
SIZE	FSCM	DWG NUMBER	REV
A	39212	831072MZ	-
DRAWN BY: A. SCHOUMAN		DATE: 05/20/03	
ENGRG:		QC APP.	
CAD# 831072MZ		SCALE: 1/2	SHEET: 1 OF 1