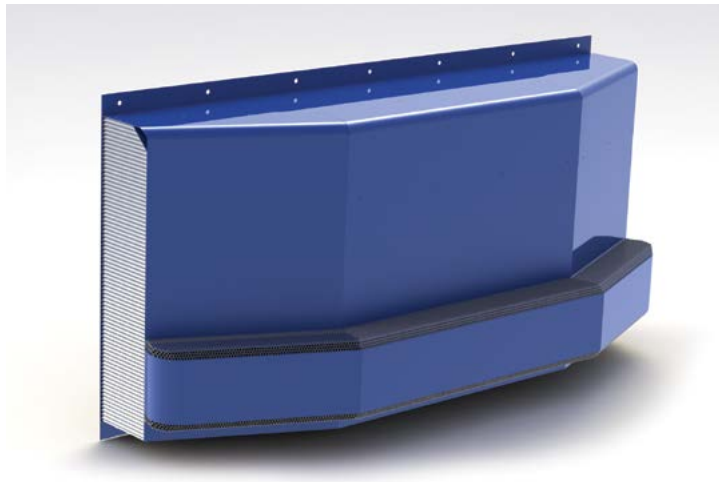




# IHS Moving Deformable Barrier

## for Side Impact Crashworthiness Evaluation



### Description

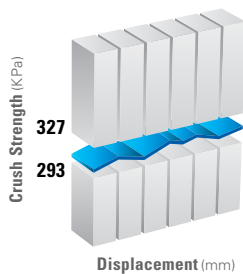
The Plascore IHS Moving Deformable Barrier is used for full scale, side impact crash testing in the automotive safety field. The performance is intended to provide a measurement tool with sufficient precision to ensure repetitive and correlative results that reflect the protective performance of a motor vehicle with respect to human occupants.

### Construction

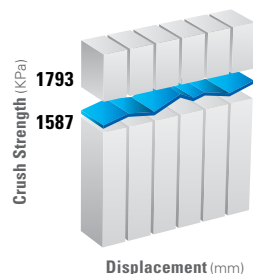
- Main Body Core 1.6-3/8-P-5052
- Bumper Core 5.2-1/4-P-3003
- Base Plate 0.8mm 5052 H34
- Main Cladding 0.7mm 5052 H34
- Upper Corner 1.6mm 5052 H34
- Bumper Base 3.0mm 5052 H34
- Bumper Cladding 3.0mm 5052 H34

### Crush Properties

Main Body Deformable Core



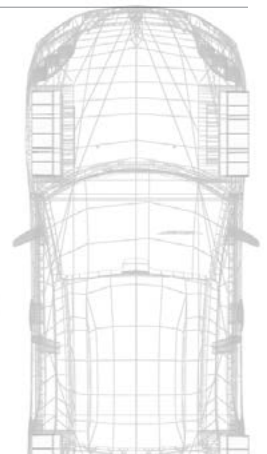
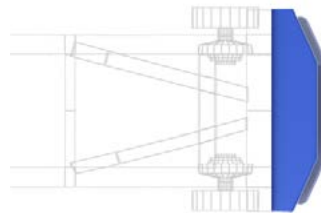
Bumper Deformable Core



### Specifications

Insurance Institute for Highway Safety  
Moving Deformable Barrier Specification  
October 2007

NHTSA Lab Test Procedure  
Dynamic Side Impact Protection  
TP214D Appendix C



### Availability

Plascore Item #39212  
Available from distribution locations worldwide.  
Includes Certificate of Conformance and Test Data.  
Paint: Grey or Blue anti-reflective paint standard. Custom paint configurations available.  
Packaging: Individual cardboard container 1750mm X 900mm X 520mm  
Packaged Weight: 36kg



Plascore, Inc., employs a quality management system that is Nadcap, AS9100, ISO 9001 and ISO 14001 certified.

**IMPORTANT NOTICE:** The information contained in these materials regarding Plascore's products, processes, or equipment, is intended to be up to date, accurate, and complete. However, Plascore cannot warrant that this is always the case. Accordingly, it is a purchaser's or user's responsibility to perform sufficient testing and evaluation to determine the suitability of Plascore's products for a particular purpose. Information in these materials and product specifications does not constitute an offer to sell. Your submission of an order to Plascore constitutes an offer to purchase which, if accepted by Plascore, shall be subject to Plascore's terms and conditions of sale. **PLASCORE MAKES NO WARRANTIES OF ANY KIND REGARDING THESE MATERIALS OR INFORMATION, EITHER EXPRESS OR IMPLIED, INCLUDING WITHOUT LIMITATION THE IMPLIED WARRANTIES OF MERCHANTABILITY AND FITNESS FOR A PARTICULAR PURPOSE.** Plascore owns and shall retain all worldwide rights in its intellectual property, and any other trademarks used in these materials are the property of their respective owners. The information in these materials shall not be construed as an inducement, permission, or recommendation to infringe any patent or other intellectual property rights of any third parties.



### Corporate Headquarters

**Plascore Incorporated**  
615 N. Fairview St.  
Zeeland, MI 49464-0170  
Phone (616) 772-1220  
Toll Free (800) 630-9257  
Fax (616) 772-1289  
Email sales@plascore.com  
Web www.plascore.com

### Europe

**Plascore GmbH&CoKG**  
Feldborn 6  
D-55444 Waldlaubersheim  
Germany  
Phone +49(0) 6707-9143 0  
Fax +49(0) 6707-9143 40  
Email sales.europe@plascore.de  
Web www.plascore.de