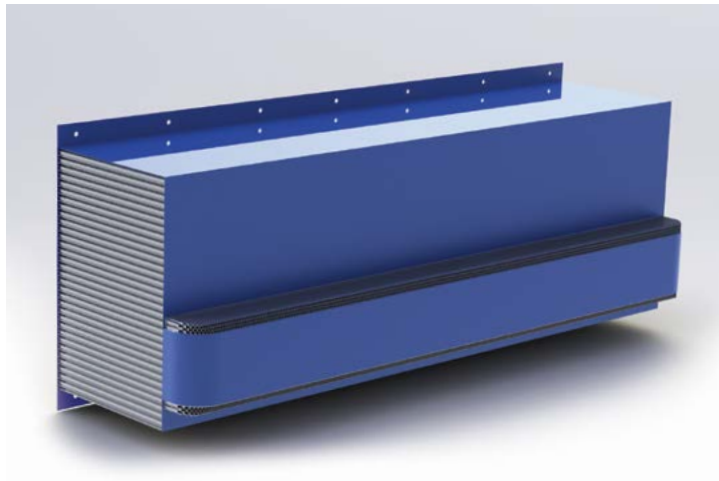




# NHTSA 214 Moving Deformable Barrier

## for Side and Rear Crashworthiness Evaluation



### Description

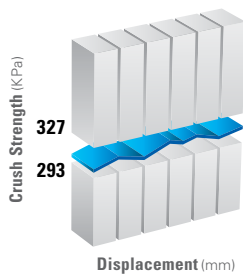
Used in automotive side and rear crashworthiness testing, the Plascore NHTSA 214 Moving Deformable Barrier is intended to provide a full-scale measurement tool with sufficient precision to ensure repetitive and correlative results that reflect the occupant protection performance of a motor vehicle.

### Construction

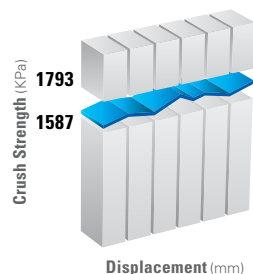
- **Main Body Core**  
1.6-3/8-P-5052
- **Bumper Core**  
5.2-1/4-P-3003
- **Base Plate** 0.8mm 5052 H34
- **Main Cladding** 0.8mm 5052 H34
- **Bumper Base Plate**  
3.2mm 2024-T3
- **Bumper Cladding**  
3.2mm 2024-T3

### Crush Properties

Main Body Deformable Core



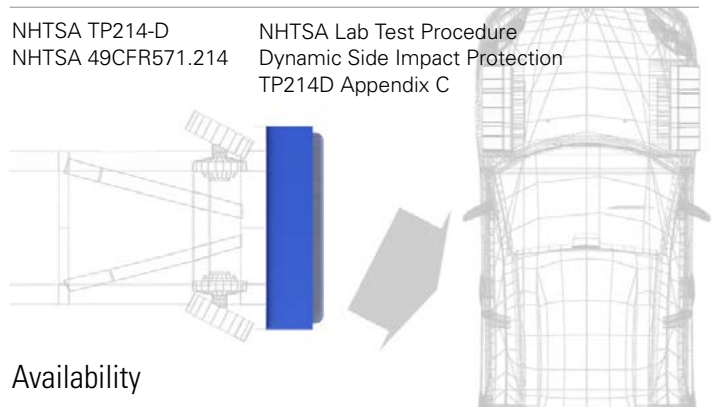
Bumper Deformable Core



### Specifications

NHTSA TP214-D  
NHTSA 49CFR571.214

NHTSA Lab Test Procedure  
Dynamic Side Impact Protection  
TP214D Appendix C



### Availability

Plascore Item B104893

Available from distribution locations worldwide.

Includes Certificate of Conformance and Test Data.

Paint: Grey or Blue anti-reflective paint standard. Custom paint configurations available.

Packaging: Individual cardboard container 1750mm X 675mm X 520mm

Packaged Weight: 33kg



Plascore, Inc., employs a quality management system that is Nadcap, AS9100, ISO 9001 and ISO 14001 certified.

**IMPORTANT NOTICE:** The information contained in these materials regarding Plascore's products, processes, or equipment, is intended to be up to date, accurate, and complete. However, Plascore cannot warrant that this is always the case. Accordingly, it is a purchaser's or user's responsibility to perform sufficient testing and evaluation to determine the suitability of Plascore's products for a particular purpose. Information in these materials and product specifications does not constitute an offer to sell. Your submission of an order to Plascore constitutes an offer to purchase which, if accepted by Plascore, shall be subject to Plascore's terms and conditions of sale. **PLASCORE MAKES NO WARRANTIES OF ANY KIND REGARDING THESE MATERIALS OR INFORMATION, EITHER EXPRESS OR IMPLIED, INCLUDING WITHOUT LIMITATION THE IMPLIED WARRANTIES OF MERCHANTABILITY AND FITNESS FOR A PARTICULAR PURPOSE.** Plascore owns and shall retain all worldwide rights in its intellectual property, and any other trademarks used in these materials are the property of their respective owners. The information in these materials shall not be construed as an inducement, permission, or recommendation to infringe any patent or other intellectual property rights of any third parties.



### Corporate Headquarters

**Plascore Incorporated**  
615 N. Fairview St.  
Zeeland, MI 49464-0170

Phone (616) 772-1220  
Toll Free (800) 630-9257  
Fax (616) 772-1289  
Email sales@plascore.com  
Web www.plascore.com

### Europe

**Plascore GmbH&CoKG**  
Feldborn 6  
D-55444 Waldlaubersheim  
Germany

Phone +49(0) 6707-9143 0  
Fax +49(0) 6707-9143 40  
Email sales.europe@plascore.de  
Web www.plascore.de